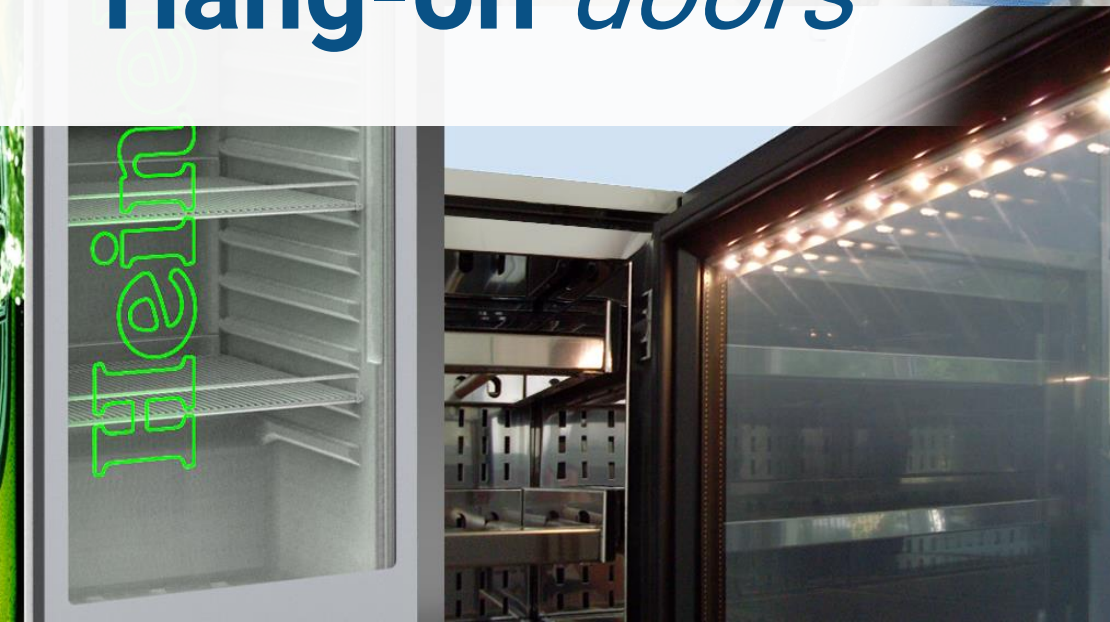




## Hang-on doors





TGD produces any kind of hang-on glass door for freestanding appliances:



***Catering appliances***

***Merchandisers***

***Minibar***



***Vending machines***

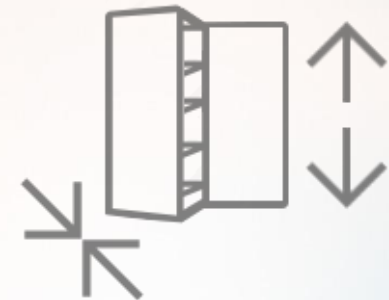
***Wine Cases***



All doors can be prepared according to NT and LT operating temperature of the cabinet:

Considering the LT version, doors can be configured:

- Full heating (glass and frame) configured



- 0 Energy



- 0 Energy can eventually be optimised with a wide range of anti-fog treatment



## NT doors:

|  |                              |                                     |                                |
|--|------------------------------|-------------------------------------|--------------------------------|
| Application temperature range              | <b>from 5° C up to 30° C</b> | Wide range of glass units available | <b>from 24 to 35mm</b>         |
| Standard door comply with                  | <b>Class 3 UNI23953</b>      | Low-e glass available on demand     | <b>from UG 1.9 down to 1.1</b> |
| Coloured glass available on demand         |                              |                                     |                                |
| UV ray filtering glass available on demand |                              |                                     |                                |

## LT heating doors:

|   |                               |                                     |                                |
|---|-------------------------------|-------------------------------------|--------------------------------|
| Application temperature range   | <b>from -30° C up to 5° C</b> | Wide range of glass units available | <b>from 29 to 35mm</b>         |
| Standard door comply with   | <b>Class 3 UNI23953</b>       | Low-e glass available on demand     | <b>from UG 1.9 down to 1.1</b> |
| Standard heating 100W sqm on the glass and 7W lmt all along the door's profile          |                               |                                     |                                |
| Possibility to increase the heating power to comply with the worst operating conditions |                               |                                     |                                |
| Possibility to tune the powering voltage on demand                                      |                               |                                     |                                |

## LT 0 Energy doors:

|   |                          |                                     |                        |
|---|--------------------------|-------------------------------------|------------------------|
| Application temperature range   | <b>-25° C up to 5° C</b> | Wide range of glass units available | <b>from 29 to 35mm</b> |
| Standard door comply with   | <b>Class 3 UNI23953</b>  | No electrical heating               |                        |
| Wide range of Anti-Fog treatments available for the internal side of the door |                          |                                     |                        |





Doors are aesthetically divided in  
three aesthetically characterised ranges:



- Framed doors: Doors with glass unit surrounded by a visible aluminum frame



- Full Glass doors: Doors with glass unit exceeding the hidden aluminium frame



- Customised doors: anything is possible to follow-up your projects

Standard aluminum frame is silver satin anodised  
RAL tinted frames are available on demand and on substantial batches requirements  
Special aluminium surface treatments (Scotch brite, chrome...) are available on demand and on substantial batches requirements



Hang-on doors can be upgraded by innovating  
Led TGD **patented** technologies

BLS1: Solution for inside products  
lighting by led included in the glass unit



BLS2: Solution for inside  
products lighting by led  
included in the glass door  
frame

LAS: Led solution for  
any door included  
logo lighting



LAS



BLS2



BLS1





## Realook®: the innovative door

Realook® the most attractive glass door, capable of transforming any unit from a simple food storage device into a powerful means of communication which captures the attention of the consumer through:

- on-screen games
- interaction with the proximity sensor
- social engagement via smartphone



Realook® can also provide extraordinary marketing information about customer behaviour and needs:

- how many people stop in front of the Realook® refrigerator;
- how many people interact with the Realook® unit and for how long;
- gender, age, ...;
- how many times the users open the Realook® unit;
- NFC/RFID loyalty card activities;
- unlock special offers with NFC tags



Hang-on doors





Realook® can streamline the management of the sales point, using a simple smartphone app to:

- update the prices of the products behind the doors in real time;
- update the names and descriptions of the products in real time;
- manage product promotions and discounts in real time, focusing the attention of customers on pre-selected products by using really attractive graphic effects.



A fantastic promoter for impulse purchasing.

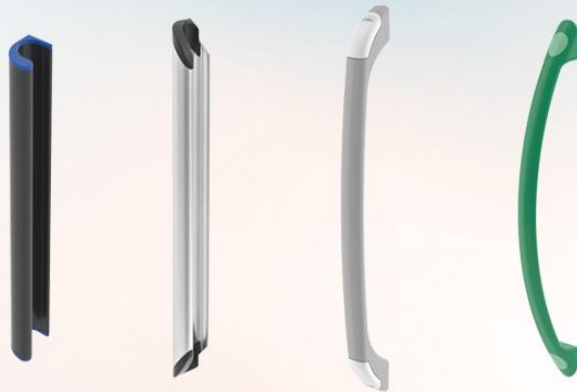
**This isn't just a door:  
it's an innovative means of distribution!**



Wide range of handles **is available**  
to improve the aesthetic of the door



- Pull handles



- Overlapping handles



- Embanked handles





| Available handles:  |             |          |                                |                  |
|---|-------------|----------|--------------------------------|------------------|
|   | NAME        | MATERIAL | STANDARD COLOR                 | OTHER COLORS RAL |
|    | <b>MAX</b>  | Aluminum | Silver satin anodised aluminum | On demand        |
|    | <b>Pop</b>  | Aluminum | Silver satin anodised aluminum | On demand        |
|    | <b>Arc</b>  | Plastic  | Ral 7035                       | On demand        |
|   | <b>Eko</b>  | Plastic  | Ral 7035                       | On demand        |
|  | <b>Flap</b> | Aluminum | Silver satin anodised aluminum | On demand        |









Doors can be equipped or predisposed for **self closing** system devices installation

TGD recommended self-closing devices are:

- Soft Power 25 / Soft Power 45
- Torsion bar
- Spring system





| Available self closing system:  |          |   |   |
|---|----------|---|---|
|   | NAME     | DESCRIPTION                               | GRANTED CYCLES  |
|    | SP25     | Soft closing device for doors up to 25Kg. | 500.000  |
|    | SP45     | Soft closing device for doors up to 45Kg. | 500,000  |
|    | T. Bar   | Torsion bar hinge                         | 500.000   |
|  | G Torque | Gravity self closing device               | 300.000   |

**TGD, *any kind of hang-on glass door***





**TGD S.p.A.**  
Via del Tovo, 5  
27020 Travaco' Siccomario (Pv) Italy  
PHONE +39 0382 482773  
FAX +39 0382 482774  
info@tgd.it  
[www.tgd.it](http://www.tgd.it)

