

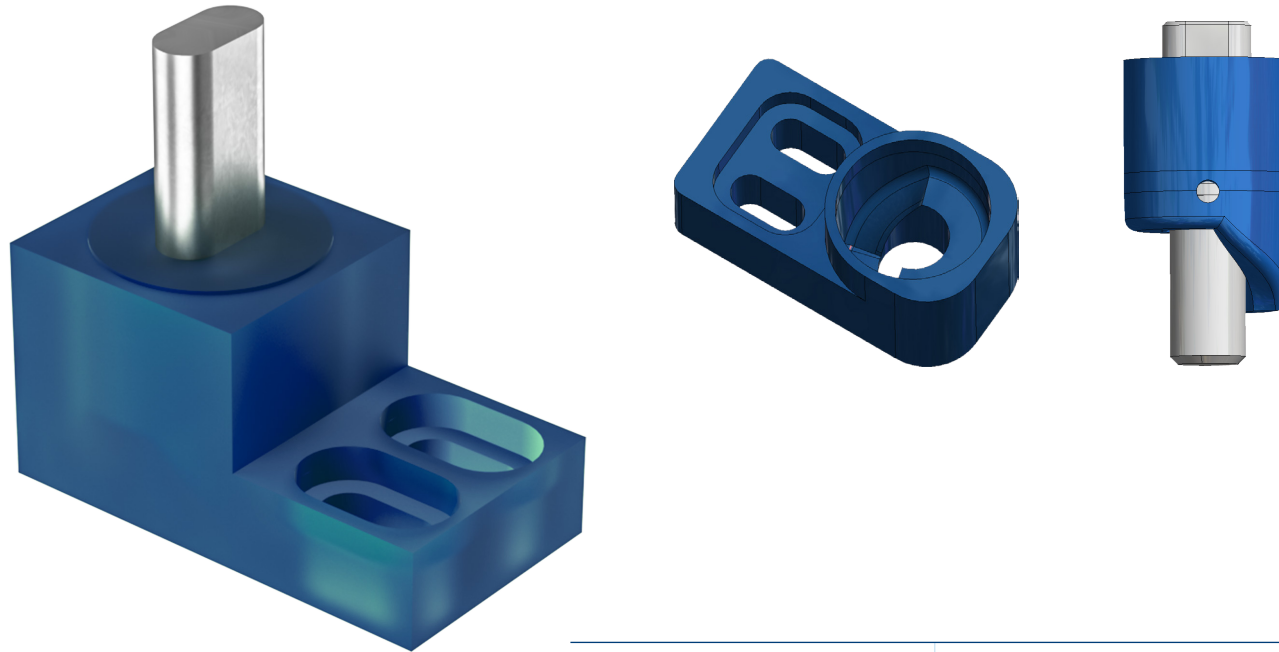
"G Torque" is a brand new gravitational self-closing device for all doors up to 25Kg total weight

The device is providing the door closing action by the weight of the door insisting on a inclined base

DESCRIPTION

Functionality	Gravity
Materials	Plastic body and slide with galvanized steel pin
Min. Operating Temperature	+ 10°C
Max. Operating Temperature	+ 50°C
Max. Door Load	25 Kg
Closing Force Setting	NO
Closing Speed Setting	NO
Operating angle	From 0° to 69°
Inertial Range	From 70° to 105°
Maximum opening degree	No limit
Maximum opening stopper	Not present
Weight	50 g

Setting instruction



SETTING INSTRUCTIONS

Installation recommendations	Check with a level that the door is perfectly straight before starting to use "G Torque". If vertical position cannot be ensured, keep care to slightly incline the door prudently backward. Be sure the door will be never inclined frontward.	
Warning	300,000 complete cycles	Tested with an electro-pneumatic device. Tested in dry and wet conditions.

Product maintenance free